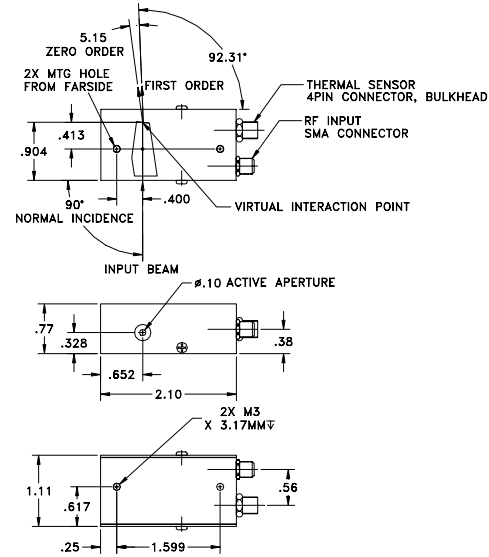


SPECIFICATIONS

AO Medium	TeO2
Acoustic Velocity	.68 mm/μs
Active Aperture*	2.5 mm Dia
RF Frequency Range	80-152 MHz
RF Bandpass (FWHM)	1115 KHz @ 515 nm
Wavelength Range	430-670 nm
VSWR	2.4 :1 Max
Input Impedance	50 Ohms Nominal
Insertion Loss	3 % Max
Temperature Sensitivity	0.05 nm/C
Diffacted Beam Collinearity, min deviation	0.01 degrees
Input Optical Polarization	Vertical
Output Optical Polarization	Horizontal
Max RF Power	3 W

Outline Drawing:

Package 97-02885-04-15r1



Document
04/23/08
Control

Notes:
 Simultaneous Diffraction, any 8 wavelengths
 Random Wavelength Access Time: < 1.5 usec (1 mm Beam Diameter)
 FWHM @ 515 = 3.5nm
 Max RF Power with 8 Simultaneous Frequencies = 3W

Special Testing	Min	Units	Max
Diffraction Efficiency (per wavelength input divergence < 2 mrad)	90	%	

THIS DOCUMENT IS THE PROPERTY OF CRYSTAL TECHNOLOGY, INC. IT IS NOT TO BE REPRODUCED OR DISCLOSED IN WHOLE OR IN PART OTHER THAN BY EMPLOYEES CRYSTAL TECHNOLOGY AND ITS CONTRACTED REPRESENTATIVES AND DISTRIBUTORS. ANY EXCEPTION REQUIRES THE WRITTEN CONSENT OF AN AUTHORIZED REPRESENTATIVE OF CRYSTAL TECHNOLOGY.

TOLERANCES: .XX ± .01 .XXX ± .005	DR	Tom NG 4/18/2008	Crystal Technology, Inc. DESCRIPTION: AOTF PCAOM 80-152 MHz Vert. Pol. 4X
MATERIAL:	CHK		
FINISH:	APP		
	APP		PART NUMBER: 97-02885-04 REV: C SHEET 1 OF 1

*Active Aperture: Aperture over which performance specifications apply.